

WEL Manager Interface Overview

Version 1.2 9/30/2011

Phil Malone.

Manager Interface Overview.

The new WELserver.com *Manager Interface* is an extension of the standard “free” WEL data display and logging interface. For a **one-time charge of \$50** any WEL user can become a WEL Manager. All WEL customers may still use the free interface, regardless of whether they are a Manager or not.

There are two main aspects to the *Manager Interface*:

- 1) The ability to seamlessly manage multiple WEL accounts.
- 2) The ability to subscribe to “enhanced” pay-as-you-go features that use additional server resources to perform more sophisticated tasks. (Each subscription ranges from \$5.49 to \$19.49 a month. See below)

Multiple WEL Accounts (No monthly fee required).

The first time a single-WEL user purchased a second WEL, it became clear that the one-login-per-WEL strategy had flaws. Switching between WEL setup screens required closing browser windows, remembering multiple passwords, and a lot of hassles.

After much soul searching, a new multi-WEL model has emerged, called the “WEL Manager”. A WEL Manager (user) is created by purchasing a Manager Account Login. This is done instantly through the Paypal Interface, and results in a new Username/Password being sent to the user via email.

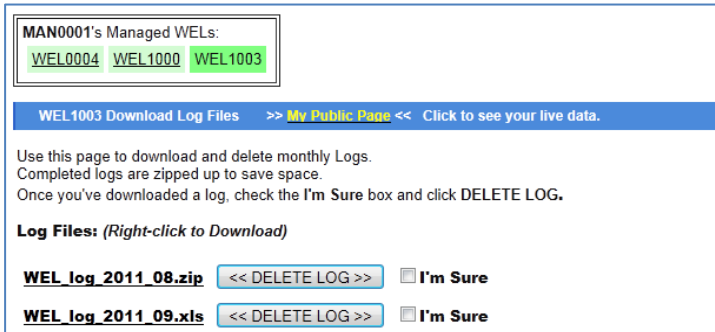
Note: Only someone with an existing WEL login can become a WEL Manager.

Once the user has their new Manager credentials, they can return to the WELserver.com website and use any of the regular Setup links to gain entry. The system will recognize their new Manager status and present a modified web interface. This Manager can then add one or more WELs to their “Managed List”. These WELs are then always available as direct jumps from all of the setup pages.

Example: A user who manages WELS 0004, 1000 & 1003 wants to download the log from each WEL.

The user would take the following steps:

- 1) Browse to the WELserver.com home page
- 2) Click on the “Download Logs” link and enter the Manager login and password.
- 3) Download WEL0004’s Log file
- 4) Click on the link to WEL1000
- 5) Download WEL1000’s Log file
- 6) Click on the link to WEL1003
- 7) Download WEL1003’s Log file



The screenshot shows a web interface for a user named MAN0001. At the top, it lists "MAN0001's Managed WELs:" with three links: WEL0004, WEL1000, and WEL1003. Below this is a blue header bar for "WEL1003 Download Log Files" with a link to "My Public Page" and a note to "Click to see your live data." The main content area contains instructions: "Use this page to download and delete monthly Logs. Completed logs are zipped up to save space. Once you've downloaded a log, check the I'm Sure box and click DELETE LOG." Underneath, there is a section for "Log Files: (Right-click to Download)" with two entries: "WEL_log_2011_08.zip" and "WEL_log_2011_09.xls". Each entry has a "DELETE LOG" button and an "I'm Sure" checkbox.

Notice that the Manager interface enables you to rapidly perform the same operation on each WEL with just a single click to change WELs. The code remembers your current task when you change WELs.

A new “WEL Summaries” page is also provided to display the current operational status of all the managed WELs. This includes time of last post, current and last errors, and firmware revision.

The screenshot shows the WEL Manager interface with the following sections:

- Managers Only:**
 - WEL Summaries
 - Advanced Alarms
 - Database Analysis
- Tech Support:**
 - Support Files
 - Install Tips
 - FAQ's
 - Purchase Online
- WEL Logging:**
 - Setup Overview
 - Set Log Order
 - Set Email Alert
 - Download Logs
- WEL Display:**
 - Set Live Data
 - Set Trend Graphs
 - Set Site Profile

Below the menus is a form to "Add a Managed WEL to MAN0001:" with fields for "WEL ID:" (eg: WEL0123) and "Password:" and an "ADD" button.

The main content area is titled "MAN0001 WEL Summaries" and contains a "WEL Activity snapshot" table:

Live Display	Website Setup	Age of Post	Local IP	F/W Rev.	Current error	Last error	Min since last error	Min since last reset	Invalid Sensors	Post Date	Post Time
WEL0004	Overview	1 M	67.142.168.141	2.18	0	0	518	518	0	09/22/2011	23:25:13
WEL1000	Overview	0 M	76.125.228.78	4.10	0	0	2115	2115	0	09/22/2011	23:25:22
WEL1003	Overview	0 M	76.125.228.78	4.10	0	70	878	1927	0	09/22/2011	23:24:13

Summary: 3 Online Units, 0 Nominal Units, 0 Offline Units

Below the table is a "WEL Subscription Status" table:

WEL	Advanced Alarms \$5.49 per month.	Database Analysis \$19.49 per month.	Remove from Management if no active Subscriptions.
WEL0004	Active	Active	N/A
WEL1000	Active	Active	N/A
WEL1003	Subscribe	Active	N/A

Unsubscribe to any/all of your WEL Services. [Unsubscribe](#)

Enhanced Subscription Features (monthly fees apply).

Once a WEL user becomes a WEL Manager, they are also able to selectively enhance their WEL capabilities with add-on Subscription services. Each service has a monthly fee associated with it to support the added server resources required to implement the feature. Subscriptions are applied to specific WELs, and run month-to-month so they can be cancelled at any time. All the subscriptions are handled through Paypal, and implemented automatically. The current subscription choices are:

Advanced Alarms (\$5.49 a month).

This new system greatly enhances the ability to detect and report WEL alarm conditions by email. Alarms (yes you can have more than one) are defined in two parts. First you define multiple alarm “Conditions”, and then these “Conditions” may be combined to form actual Alarm “Events”. Each Event can generate a unique email message to one or more email recipients.

Alarm Conditions are based on a single WEL device (chosen from a pull-down list) value compared against a known value. A virtual device is also available which corresponds to the number of minutes since the last data upload, so loss-of-data-link can also be reported.

Alarm Events are then defined by selecting one or more alarm conditions and combining them with AND/OR logic. Compound alarms Events can be formed based on multiple conditions: eg: HSHP_on AND CirculatingPumpOFF

The Alarm Setup page displays the current state of each alarm condition and event using color.

Advanced Alarms have also been set up to require less human intervention.

When an alarm first occurs, it is reported by email ONCE, and then not again until the alarm has first gone back to its un-alarmed state.

So, unlike the normal WEL alarm system, you don't need to manually reset the alarm to make it occur again, but you still only get one email per alarm condition.

Device Conditions

Use this first table to create **Device Conditions**. Note: Conditions are then combined later to trigger one or more Alarm Events.

Give each **Condition** a meaningful name that expresses the actual condition being checked. Word the name so you know what it means to be "TRUE". Eg: use "Tank_Too_Hot" rather than "Tank_Temperature". You can create up to 20 **Conditions**. The names you enter will be "sanitized" to only include basic alpha-numeric characters (and the underscore).

A new blank Condition line will be created each time you click **Update**.

Your Device Conditions. (Alarm Events are based on one or more of these conditions)			
Short name for this Condition (blank to erase)	Device/Event to be tested	Comparison to be made	Threshold
Offline	Minutes since last post	Is Greater than	10
Warm_Outside	A0	Is Greater than	75
Sunny_Outside	S5	Is ON	
		Is ON	

Update

Alarm Events

Once you have your conditions set up, you can create up to 10 **Alarm Events** in the second table. These are what generate the actual e-mail Alerts.

Each table row corresponds to a single **Alarm Event**. As before, give your alarms meaningful names and these will "sanitized" to only include basic alpha-numeric characters.

Alarm Events can be generated based on one OR MORE Conditions. If an alarm is dependant on more than one Condition, decide whether you want to signal an **Alarm Event** when Any or All of the Conditions are TRUE. For example, you might raise an alarm if **ANY** of your zones go below 35 degrees, or you might raise an alarm if **ALL** of your zones are on.

To select the desired Conditions for the alarm, make one or more selections in the Conditions list. The scrolling list should contain all your Conditions from the first table. If it doesn't, click any **Update** button to refresh the list. Use the < Ctrl > key to select multiple items in the list.

Finally, enter one or more email addresses (one per line) and a Subject line for the email. Use this subject line to identify WEL Alarms in your mail program (eg. add a prefix for filtering). Alarm emails will be sent from alarms@server.webenergylogger.com so add this to your address book so they get through your SPAM filters.

Alarm Events (which cause emails)				
Alarm Name (blank to erase)	Any/All (selected Conditions)	Conditions (Ctrl Select multiples)	Email Address(s) (one per line)	Email Subject
WEL_1000_Offline	Any Condition	Offline Warm_Outside Sunny_Outside	Phil.Malone@mr-phil.com	WEL 1000- offline
Warm	All Conditions	Offline Warm_Outside Sunny_Outside	Phil.Malone@mr-phil.com onlinestoreemail@mr-phil.com	Go outside. Its Warm and Sunny
	All Conditions	Offline Warm_Outside Sunny_Outside		

Update

Database Analysis (\$19.49 a month).

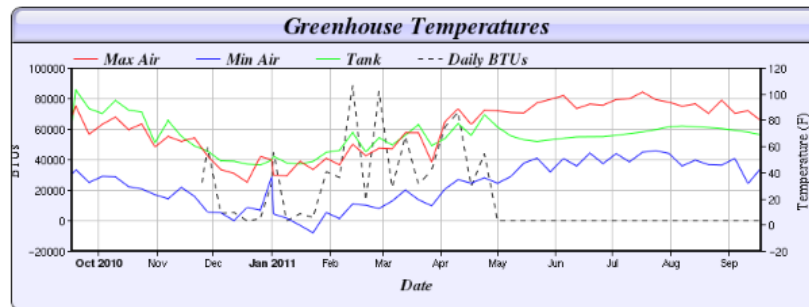
The WEL's free charting system is quite flexible, but only if you know what you want to chart ahead of time. There is no memory of past data that wasn't being charted. The past data may be post-processed by downloading the log files and doing analysis using a tool like Excel, but this can be quite tedious based on how much data there is to process. The new Database Analysis system changes all that.

However, if you subscribe to the new Database Analysis feature, your live data is captured, compacted, and added to a searchable database for later display. Data for EVERY named Device (and treatment) is collected for each hour and processed to determine four fundamental properties: Minimum (Min), Maximum (Max), Average (Avg), and Last (Last) values for that hour. These four properties are then time-stamped and saved in the database.

A new Graph Definition page has been created to make it easy to define and save custom Graphs based on data retrieved from the database. These Graphs can summarize data hourly, daily, weekly, monthly and yearly. They can have independent left and right vertical axes, with auto or manual scaling. The data can be based on historic days, or a specified time period. Text fonts, colors and attributes can be specified.

The data to be displayed is selected from pull-down lists and can have custom colors, line styles, left/right axes and display names. Each line can use one of the four data properties (min, max, avg, last) depending on the meaning of the data being displayed.

Graph definitions can be copied, renamed and modified to produce a variety of charts.

Chart: [first URL](#) [Analysis Page](#)

Summarize	Time Mode	History	First Date	Last Date	
weekly	history				Update
			(Days, 0=all)	(yyyy-mm-dd)	(yyyy-mm-dd)

Device	Value	Color	Axis	Width	Style	Label
OutsideAir	max	red	right	1	solid	Max Air
OutsideAir	min	blue	right	1	solid	Min Air
TankTop	avg	green	right	1	solid	Tank
BTU_Day_D	avg	black	left	1	dashed	Daily BTUs
	avg	black	right	1	solid	

Update

Chart Width	800	X Axis Caption	Date
Chart Height	300	X Axis Caption Font Style	timesbi
Chart Caption	Greenhouse Temperatures	X Axis Caption Font Size	12
Chart Caption Font Style	timesbi		
Chart Caption Font Size	18		

Update

Y Axis Usage		both	
Left Y Axis Caption	BTUs	Right Y Axis Caption	Temperature (F)
Left Y Axis Caption Color	black	Right Y Axis Caption Color	black
Left Y Axis Caption Font Style	times	Right Y Axis Caption Font Style	times
Left Y Axis Caption Font Size	12	Right Y Axis Caption Font Size	12
Left Y Axis Mode	full	Right Y Axis Mode	full
Left Y Axis Min Value	0 << Manual Mode	Right Y Axis Min Value	0 << Manual Mode
Left Y Axis Max Value	100 << Manual Mode	Right Y Axis Max Value	100 << Manual Mode

Update

Obtaining a Manager Login.

A Manager Login can only be requested when you are logged into a standard WEL account. The easiest way to do this is to simply click on the new "Advanced Tools" link in the upper right corner of the screen and enter a Standard WEL login.

Recommendation: Log in using a WEL ID that you want to include in your new Manager Account.

Once you log in, you will be presented with a "WEL Management Signup page", on this page is a brief description of the Management Concept, and a Paypal "Buy Now" button.

Before clicking the Buy Now button, please enter a password that you'd like to be used on your account.

After completing your payment, the WELServer system will send your new credentials to your registered paypal email address. Please close your browser window so once you get your new credentials you can log in again using them. Note that your new login will start with the letters "MAN" and end with 4 digits. If you did not enter a suitable password prior to clicking the Buy Now button, a random password will be assigned to you.